

Skånemästerskapet Höganäs



Oil Pattern Distance: **42 Feet**
 Forward Oil Total: **19.75 mL**
 Forward Boards Crossed: **395 Boards**

Reverse Brush Drop: **32 Feet**
 Reverse Oil Total: **5.1 mL**
 Reverse Boards Crossed: **102 Boards**

Oil Per Board: **50 uL**
 Volume Oil Total: **24.85 mL**
 Total Boards Crossed: **497 Boards**

Start	Stop	Loads	Speed	Crossed	Start	End	Feet	T.Oil
1	2L 2R	7	10	259	0.0	8.5	8.5	12950
2	9L 9R	2	14	46	8.5	12.4	3.9	2300
3	11L 11R	2	18	38	12.4	17.5	5.1	1900
4	13L 13R	2	18	30	17.5	22.6	5.1	1500
5	15L 15R	2	22	22	22.6	28.8	6.2	1100
6	2L 2R	0	22	0	28.8	34.0	5.2	0
7	2L 2R	0	26	0	34.0	42.0	8.0	0

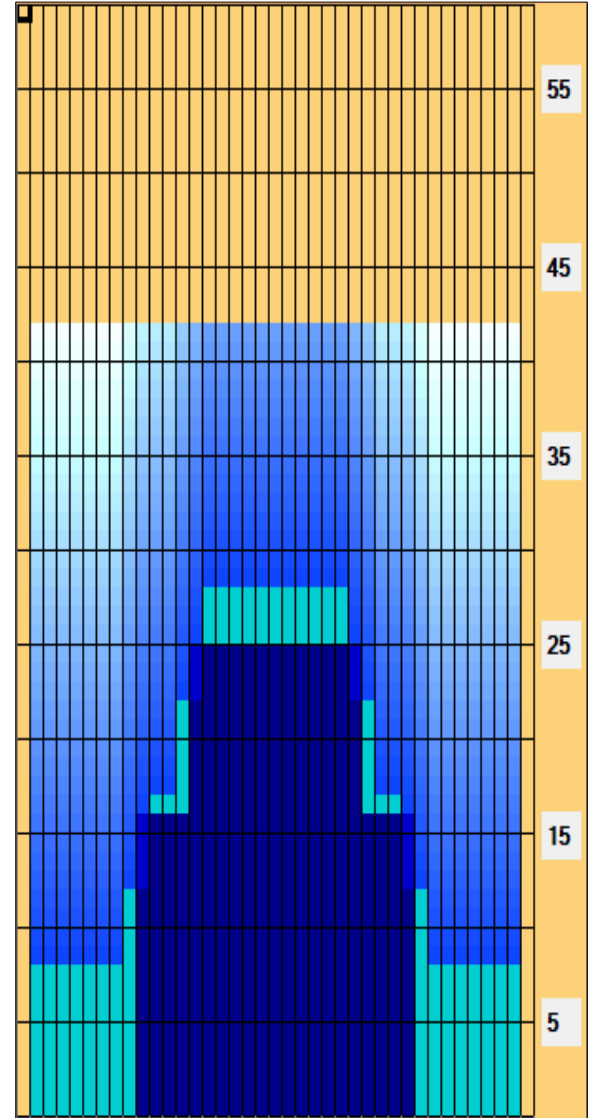
Conditioner: Type In or Select One
 TransferType: Type In or Select One

Forward Reverse More

Start	Stop	Loads	Speed	Crossed	Start	End	Feet	T.Oil
1	2L 2R	0	30	0	42.0	25.0	-17.0	0
2	14L 14R	3	22	39	25.0	15.7	-9.3	1950
3	10L 10R	3	18	63	15.7	8.1	-7.6	3150
4	2L 2R	0	14	0	8.1	0.0	-8.1	0

Forward Reverse More

- Forward
- Reverse
- Combined
- Buff



Gjord av Joakim Biehl 2023

Item	3L-7L:18L-18R	8L-12L:18L-18R	13L-17L:18L-18R	18L-18R:17R-13R	18L-18R:12R-8R	18L-18R:7R-3R
Description	Outside Track:Middle	Middle Track:Middle	Inside Track:Middle	Middle: Inside Track	Middle:Middle Track	Middle:Outside Track
Track Zone Ratio	3	1.88	1.07	1.07	1.88	3

